

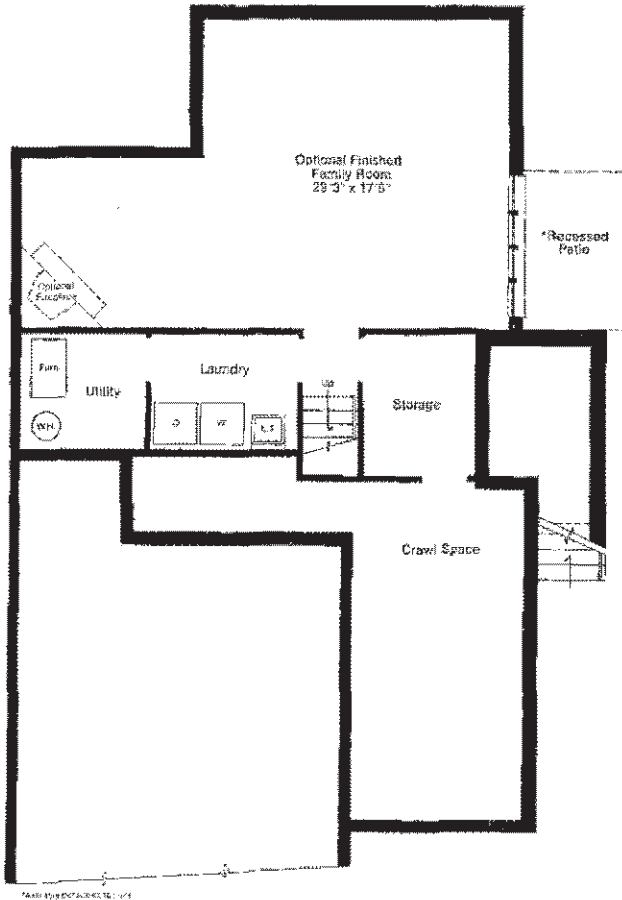
MONTICELLO

**3 bedroom split-level,
3 full baths, fireplace,
separate dining room,
2-car garage, 2 private
patios and basement.**

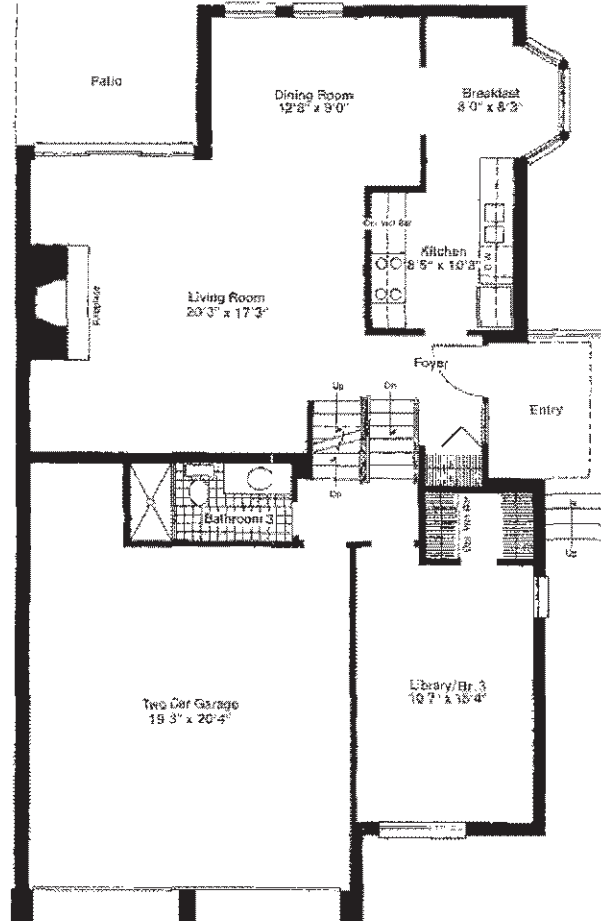
Dramatic entry foyer or gallery with decorator hard-surface flooring.
Cathedral ceiling over living and dining rooms.
Woodburning fireplace in choice of style.
Fully carpeted with 100% Nylon Saxony shag over padding.
No-wax Congoleum vinyl floor in kitchen.
All deluxe appliances included: double-oven range with self-cleaning feature, 17 cubic foot frost-free double door refrigerator-freezer, 4-cycle dishwasher and waste disposer.

All-wood cabinets in choice of style and finish.
Bay-windowed breakfast room.
Downstairs library/bedroom with full bath.
Master bedroom suite with walk-in closet, dressing salon with vanity and sink plus private ceramic tiled bath with second sink and vanity.
The master bath offers the added luxury of "his 'n' hers" separate bathtub and shower stall.

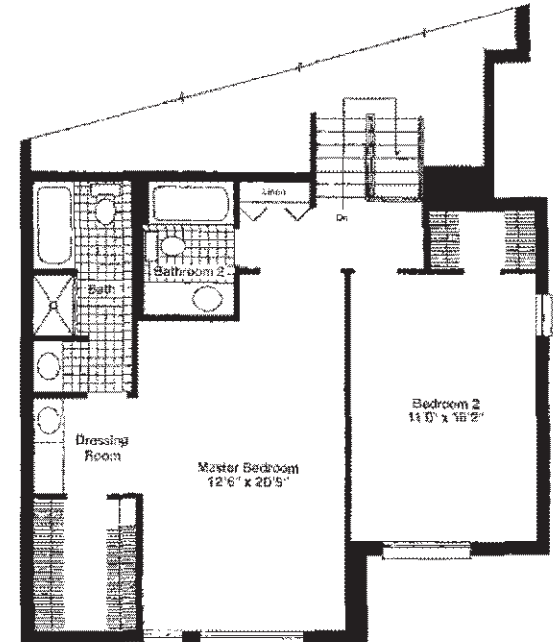
The following floor plans are intended for illustrative purposes only. All dimensions are approximate and subject to architectural adjustment and minor construction variances.



BASEMENT PLAN



FIRST FLOOR PLAN



SECOND FLOOR PLAN